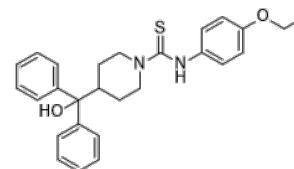


**Product Name** : Y2R antagonist SF-11  
**Cat. No.** : PC-26143  
**CAS No.** : 443292-81-7  
**Molecular Formula** : C<sub>27</sub>H<sub>30</sub>N<sub>2</sub>O<sub>2</sub>S  
**Molecular Weight** : 446.61  
**Target** : Neuropeptide Y Receptor  
**Solubility** : 10 mM in DMSO



## Biological Activity

Y2R antagonist SF-11 is potent, selective and brain penetrant antagonist of Neuropeptide Y Y2 Receptor (Y2R) with IC<sub>50</sub> of 199 nM, induces antidepressant-like effect in rats.

## References

Domin H, et al. ACS Chem Neurosci. 2019 Aug 21;10(8):3454-3463.

Brothers SP, et al. Mol Pharmacol. 2010;77(1):46-57.

**Caution: Product has not been fully validated for medical applications. Lab Use Only!**

E-mail: tech@probechem.com